

Signature 2200

Platinum ATX 3.1

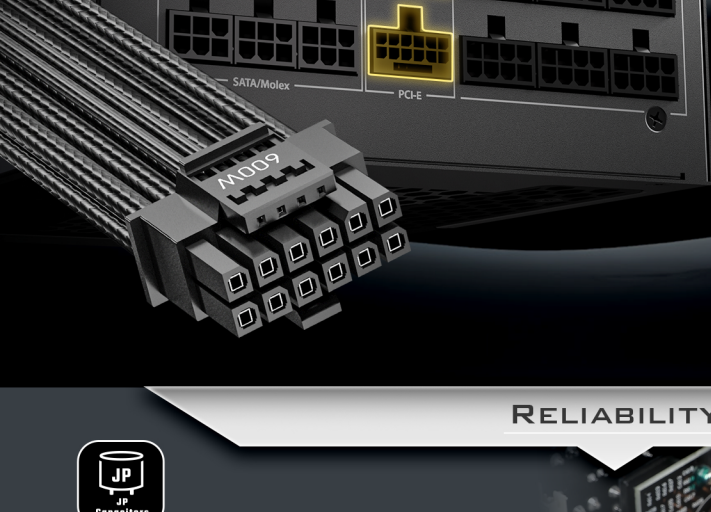
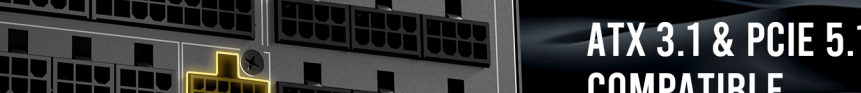


FUTURE-READY FOR

AI & NEXT-GENERATION
COMPUTING

Introducing the Signature 2200 Platinum ATX 3.1 Power Supply. The Signature 2200 Platinum ATX3.1 is Antec's high-performance ATX 3.1 power supply, designed to support modern, power-demanding systems. It features key industry standards including ATX 3.1 and PCIe 5.1 compliance, 100% high-quality Japanese capacitors, fully modular cabling, and up to 94% efficiency certified by 80 PLUS® Platinum. Built for reliability and efficiency, the Signature 2200 is a solid foundation for advanced PC builds.

With robust GPU support, server-grade PhaseWave™ design, and quiet thermal performance, this power supply is engineered for AI computing, professional workloads, workstations, and next-generation PC enthusiasts. Delivering reliable, high-efficiency power, it's ideal for AI-driven applications.



ATX 3.1 & PCIe 5.1
COMPATIBLE

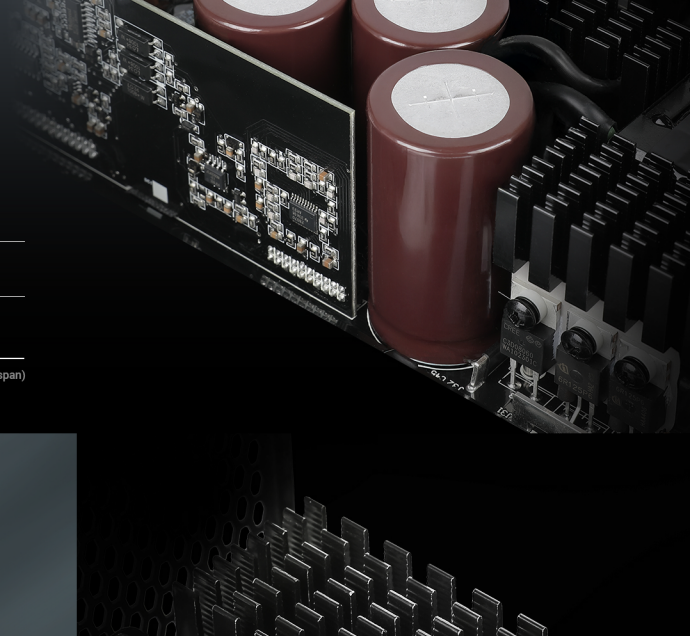
Fully compliant with the latest ATX 3.1 standard, the Signature 2200 ensures top-tier reliability and power efficiency. The bundled PCIe 5.1 12V-2x6 GPU cables provide robust support for modern high-performance graphics cards.

RELIABILITY



100% HIGH-QUALITY
JP CAPACITORS

Built entirely with premium Japanese capacitors, the Signature 2200 Platinum ATX3.1 delivers ultra-tight voltage regulation, minimal ripple, and long-term stability.



PHASEWAVE™ DESIGN

Server-grade full-bridge LLC architecture with synchronous rectification and DC-DC topology ensures consistently efficient and stable power delivery across all rails.



CIRCUITSHIELD™

The full suite of industrial-grade protections includes OCP, OVP, UVP, SCP, OPP, OTP, SIP, and NLO, providing the best dependability for your power supply in any situation.

12 YEARS
WARRANTY

12-YEAR WARRANTY

Pushing the standard for excellence with the full-suite industrial protections, backed by a 12-year warranty duly committed by Antec.

FAN FUNCTION



ZERO RPM MANAGER

Smart fan control system with a true fan-off mode during low power draw, ensuring silent operation and extended fan lifespan.



135MM FDB SILENT FAN

Equipped with a whisper-quiet 135mm fluid-dynamic bearing fan for high airflow, durability, and near-silent operation even under load.



SYSTEM BUILD & CABLE MANAGEMENT

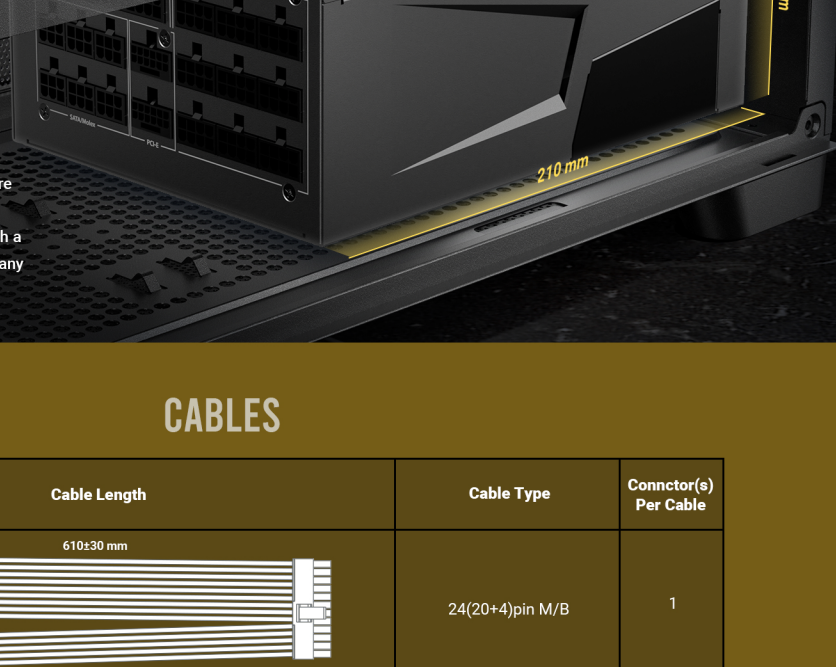


FULL MODULAR
CABLE MANAGEMENT

Reduces cable clutter and improves airflow with fully modular cables. Use only what you need for a clean, streamlined build and optimal thermal performance.

COMPACT
HIGH-POWER DESIGN

Delivering up to 2200W of power, the Signature 2200 Platinum ATX 3.1 is built in a compact chassis, allowing for greater compatibility with a wide range of high-end cases compared to many other high-wattage PSUs.



CABLES

| QTY | Cable Length | Cable Type | Connector(s) Per Cable |
|-----|---|--|------------------------|
| 1 | 610±20 mm | 24(20+4)pin M/B | 1 |
| 2 | 700±20 mm | 16(12+4)pin PCIe 5.1 12V-2x6 (600W) | 2 |
| 2 | 700±20 mm | 8pinx2 to 16(12+4)pin PCIe 5.1 12V-2x6 | 2 |
| 4 | 750±30 mm | 8(6+2)pin PCI-E | 4 |
| 3 | 700±30 mm | 8(4+4)pin CPU | 3 |
| 4 | 500±15 mm 150±15 mm 150±15 mm 150±15 mm | SATA | 16 |
| 1 | 400±30mm 150±30 mm | SATA | 2 |
| 1 | 450±30mm 120±30mm 120±30mm | Molex | 3 |

CONNECTORS

| | | | | | | |
|----|----|----|----|-----|----|----|
| | | | | | | |
| x1 | x2 | x3 | x4 | x18 | x3 | x2 |

INPUT

200-240Vac, 50-60Hz, 15A

OUTPUT

| +3.3V | +5V | +12V | -12V | +5VSB |
|-------|-----|---------|------|-------|
| 25A | 25A | 183.33A | 0.5A | 3.0A |
| 125W | | 2200W | 6.0W | 15W |
| 2200W | | | | |

SPECIFICATIONS

| | |
|----------------------------|--|
| Model | Signature 2200 Platinum ATX3.1 |
| Safe Model | V8000A868SU-25 |
| Type | ATX 12V 3.1 |
| Dimension | 210(L)*150(W)*88(H) |
| Modular | Full-Modular |
| Warranty | 12 years |
| Input Voltage | 200V-240V |
| Input Current | 15A |
| Input Frequency Range | 50Hz-60Hz |
| PFC | Active PFC |
| Power Good Signal | 100-150ms |
| Protection | OCP, OVP, UVP, SCP, OPP, OTP, SIP, NLO |
| Output Capacity | 2200W |
| Operation Temperature | 0-50°C |
| Regulatory | cTUVus/TUV/CB/CE/FCC/UKCA/3C |
| Fan | 135mm FDB Silent Fan |
| Certifications | 80 Plus Platinum |
| Connector | 1 x 24(20+4)pin MB 2 x 16(12+4)pin PCIe 5.1 12V-2x6 2 x 12V-2x6 (2x8pin to 12+4pin) 3 x 8(4+4)pin CPU 4 x 8(6+2)pin PCI-E 18 x SATA 3 x Molex |
| Shipping Dimensions (BULK) | 600(L)mm*505(W)mm*205(H)mm |
| Net Weight (BULK) | 4.43kg |
| Gross Weight (BULK) | 4.85kg |
| UPC# | 0-761345-20156-8 SP2200 US 0-761345-20157-5 SP2200 EC 0-761345-20158-2 SP2200 GB 0-761345-20159-9 SP2200 US BULK 0-761345-20160-5 SP2200 EC BULK 0-761345-20161-2 SP2200 GB BULK 0-761345-20172-8 SP2200 CN BULK |